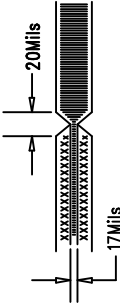


REVISIONS		
REV	APPR	DATE


NOTES: UNLESS OTHERWISE SPECIFIED:

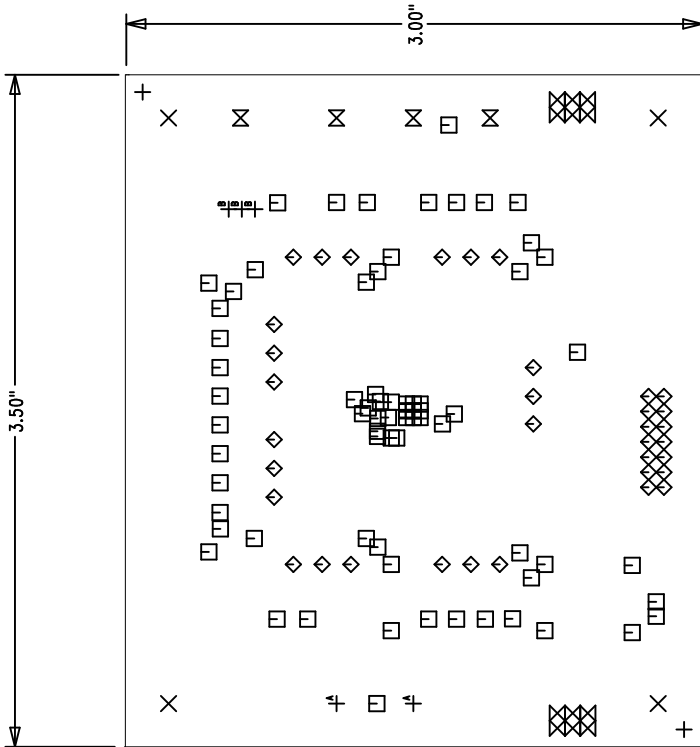
- ARTWORK P/N Demo Circuit 1265A
- FAB PER IPC-A-600. 4-Layers.
- MATERIAL: EPOXY FIBERGLASS, NEMA GRADE FR-4
.062 +/- .005 INCH THICKNESS WITH 2 OZ.
COPPER FINISH ON TWO OUTER LAYERS AND
1 OZ. COPPER ON TWO INTERNAL LAYERS.
FLAMMABILITY RATING: 94 V-2 MINIMUM .
- SIZE: CUT TO DIMENSIONS AND TOLERANCES SHOWN.
- BOARD: SELECTIVE PLATED BOARD. SOLDER
MASK OVER BARE COPPER, COLOR, GREEN LPI.
GOLD IMMERSION (ENIG) BOTH SIDES.
FOR SILKSCREEN: USE WHITE NON-CONDUCTIVE INK.
PLATE THRU ALL HOLES WITH COPPER
MIN. PLATING THICKNESS: 1 OZ. EXCEPT
WHERE PLATING NOT REQUIRED
- DRILL: ALL HOLES SHALL BE DRILLED +/- .003 INCH
WITH RESPECT TO CTR. OF DRILLED PAD.
ALL HOLES FINISHED SIZE AFTER PLATING.
- DO NOT ALTER ARTWORK e.g. TO ADD LOGO OR DATE CODE OR
ELECTRICAL TEST STAMP, BUT YOU MAY MODIFY PAD SIZE TO
MEET END FINISH.
- SCORING FOR PANELIZED PCB: "PRODUCTION RUN ONLY"



- DO NOT ALTER SOLDER MASK MAINTAIN .0018" OVERSIZE
ON SMT PADS. A .005" WEBBING IS REQUIRED BETWEEN SMD PADS.
- PCB'S ARE TO BE ROHS COMPLIANT.
- PCB'S ARE TO BE SERIALIZED.

Fabrication Drawing

APPROVALS			 LINEAR TECHNOLOGY	1630 McCarthy Blvd. Milpitas, CA 95035 PH: (408)432-1900
	INIT	DATE		
DRAWN				
CHECK				
DESIGN	N/C			
ENGR	M.Merchont			
TITLE:			LTC3220EPF /LTC3220EPF-1	
			360mA UNIVERSAL 18-CHANNEL LED DRIVER	
SIZE		NONE		REV. A
			DC1265A	
SCALE = NONE			SHT 1 of 1	



Fabrication Drawing

Linear Tech. Corp.
Demo Circuit 1265A

SIZE	QTY	SYM	PLATED	TOL
72	2	+	NO	+/- .0003
180	4	X	YES	+/- .0003
10	71	□	YES	+/- .0003
35	35	◇	YES	+/- .0003
30	12	⊗	YES	+/- .0003
63	4	⊗	YES	+/- .0003
94	2	⊕	YES	+/- .0003
20	3	⊕	YES	+/- .0003